

Your Partner in Probing Solutions



C-4-RF Probe Station

Comprehensive probe station for all your RF measurements

The C series is our entry level probe station product line. It's features fundamental mechanisms for your basic probing needs. This providing repeatable, accurate measurements in both DC and RF applications. :

Features


- Low profile coaxial-driven style stage for quick and fine movement
- U-Shaped Chuck for calibration substrate support during measurement
- Chuck Up/Down Adjustment and Fine Theta Rotation
- Back-lash free movement
- Mounting for 12 micropositioners
- Passive Vibration Isolation

Applications

- RF, Single Broadband Probing
- Basic IV/CV
- Photonics

Accessories

- Hot Chuck with Temperature Controller
- Vibration Free Table
- Shielding Box

 西華産業株式会社

東京都千代田区丸の内3-3-1新東京ビル3F
西華産業株式会社 電子機器部
当製品担当窓口/森本頼子(もりもとよりこ)
TEL: +81-3-5221-7112
morimotoy@jp.seika.com
<https://www.seika.com/>

C-4-RF PROBE STATION

Your Partner in Probing Solutions

Station Specifications

Station Footprint	580 mm W x 460 mm D
Station Height	450 mm (to Platen)/700 mm (to Microscope)
Station Weight	40kg
Platen Material	Hard Chrome Plated Steel
Platen Dimension	250 mm Inner, 450mm Outer
Platen Capacity	12 DC or 4 RF 4 DC
Positioner Mount	Magnetic ON/OFF Switch
No. of Vacuum Switches	3 (Sample), 2 (Substrate)
Chuck Material	Stainless Steel
Chuck Stage Type	Coaxial (Large Knob Optional)
Chuck Travel Range	4" x 4"
Chuck Quick Resolution	25 mm/rev
Chuck Fine Resolution	1 μ m
Chuck Theta Travel	360° (Coarse), 30° (Fine)
Chuck Z-Motion	4 mm Range
Chuck Z Fine Resolution	1 μ m
Coaxial Chuck Movement	Bevelled Gear and Rack 0.8mm Pitch
Large Knob Chuck Movement	High Precision Linear Stage
Chuck Size	4" (150 mm)
Chuck Planarity	3 μ m
Chuck Rigidity	15 μ m / 10 N @ edge
Chuck Vacuum Grooves	Center, 1", 3", 5" (Individually Controlled)
Chuck Bias Capacity	Up to 500 V
Chuck Isolation	1 G Ω
DUT Size Range	2 mm - 150 mm
Microscope Zoom Range	1x - 5x
Microscope Eye Piece	20x
Microscope Magnification Range	20x-100x

*Other microscopes are available in our supply. For more questions, please contact us directly

C-4-RF PROBE STATION

Micropositioner Options

All micropositioners offer X-Y-Z linear-motion travel with no backlash with mounting options including magnet, vacuum or magnet switch



EB-050E + TH-TU-T

Resolution: 0.8 μm

Screw Resolution: 212 μm

Travel Range: Linear 12 mm X-Y-Z

Dimensions: 52 mm W x 96 mm D x 76 mm H

Base Type: Magnet ON/OFF

Weight: 550 g

Tip Holder: Triaxial Tubular with Soft Landing



EB-005E

Resolution: 0.6 μm

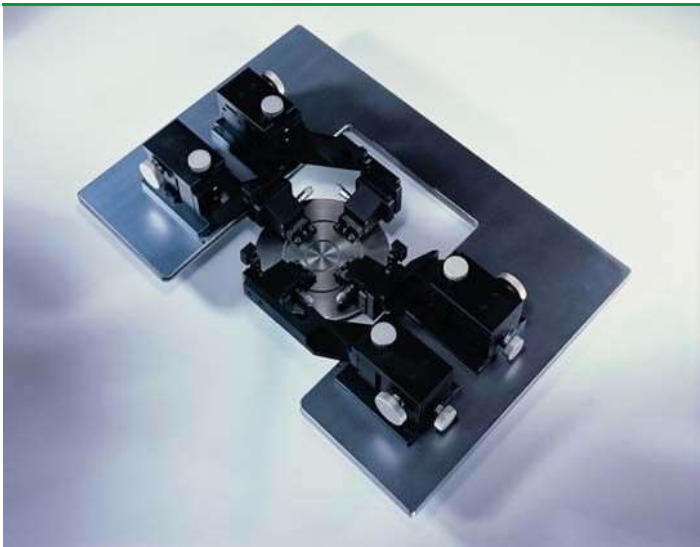
Screw Resolution: 125 μm

Travel Range: Linear 12 mm X-Y-Z

Dimensions: 90 mm W x 130 mm D x 90 mm H

Base Type: Magnet ON/OFF

Weight: 1000 g



EB-005-RFT

Resolution: 0.01 $^{\circ}$

Travel Range: $\pm 12^{\circ}$

C-4-RF PROBE STATION

RF Probes

Everbeing partners with GGB Industries to sell the Picoprobe line of products. Picoprobes are proven to be a irreplaceable for performing on-chip high frequency measurement



67A-GSG-100-DP RF Probe

Frequency Max: 67 GHz

Probe Configuration: GSG Footprint

Pitch: 100 μm

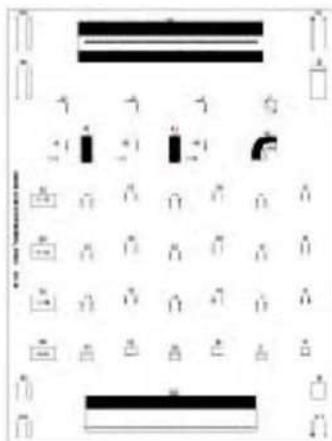
Insertion Loss: Less than 1.1 db

Return Loss: Greater than 14 db

Repeatability: -80 db

Probe Material: BeCu

Connector: 1.85 mm Female (V Connector)



CS-5 Calibration Substrate

Footprint: GSG

Pitch Range: 75-250 μm

Pad Size: 50 μm

Calibration Method: Short-Open-Load-Through, Line-Reflect-Line, Line-Reflect-Match

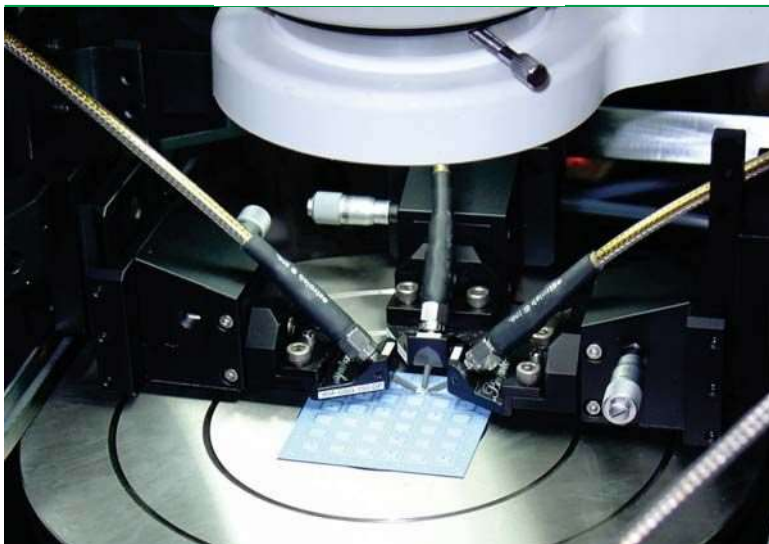


Image showing integration of Micropositioner with RF probes

C-4-RF PROBE STATION

Accessory and Options (Cont'd)



PS-SB-4/6 Shielding Box

The PS-SB-4/6 Shielding Box blocks external sources of electromagnetic interference and radiation. Such types of radiation has a strong impact on low noise current measurements and can mask your intended results. For measuring in the pA or fA range of currents, this product is recommended.

- 650 mm W x 580 mm D x 800 mm H
- 16 Feedthrough Holes (* left and right)
- Rear Cable through Slot



VFT-3636 Vibration Free Table

- Dimension:** 36" W x 36" D x 36" H
- Vertical Natural Frequency:** 1.5 Hz
- Isolation Efficiency:** @ 5 Hz 85%
- Horizontal Natural Frequency:** 1.2 Hz
- Isolation Efficiency:** @ 5 Hz 91%
- Air Requirement:** 80 psi
- Net Load:** 200 kg
- Material:** Stainless Steel TableTop

C-4-RF PROBE STATION


Accessory and Options (Cont'd)



HT-200-4 Hot Chuck

The HT-200-4 is a 4 inch hot chuck with temperature control up to 200 °C. The integrated PID controller allows 0.1 °C precision control. Cooling is controlled via a manual water tank.

- 4" Chuck
- RT ~ 200 °C
- DC Powered (220V)
- PID Controller Integrated
- 0.1 °C Temperature Resolution

 **西華産業株式会社**

東京都千代田区丸の内3-3-1新東京ビル3F
西華産業株式会社 電子機器部
当製品担当窓口/森本頼子(もりもとよりこ)
TEL: +81-3-5221-7112
morimotoy@jp.seika.com
<https://www.seika.com/>